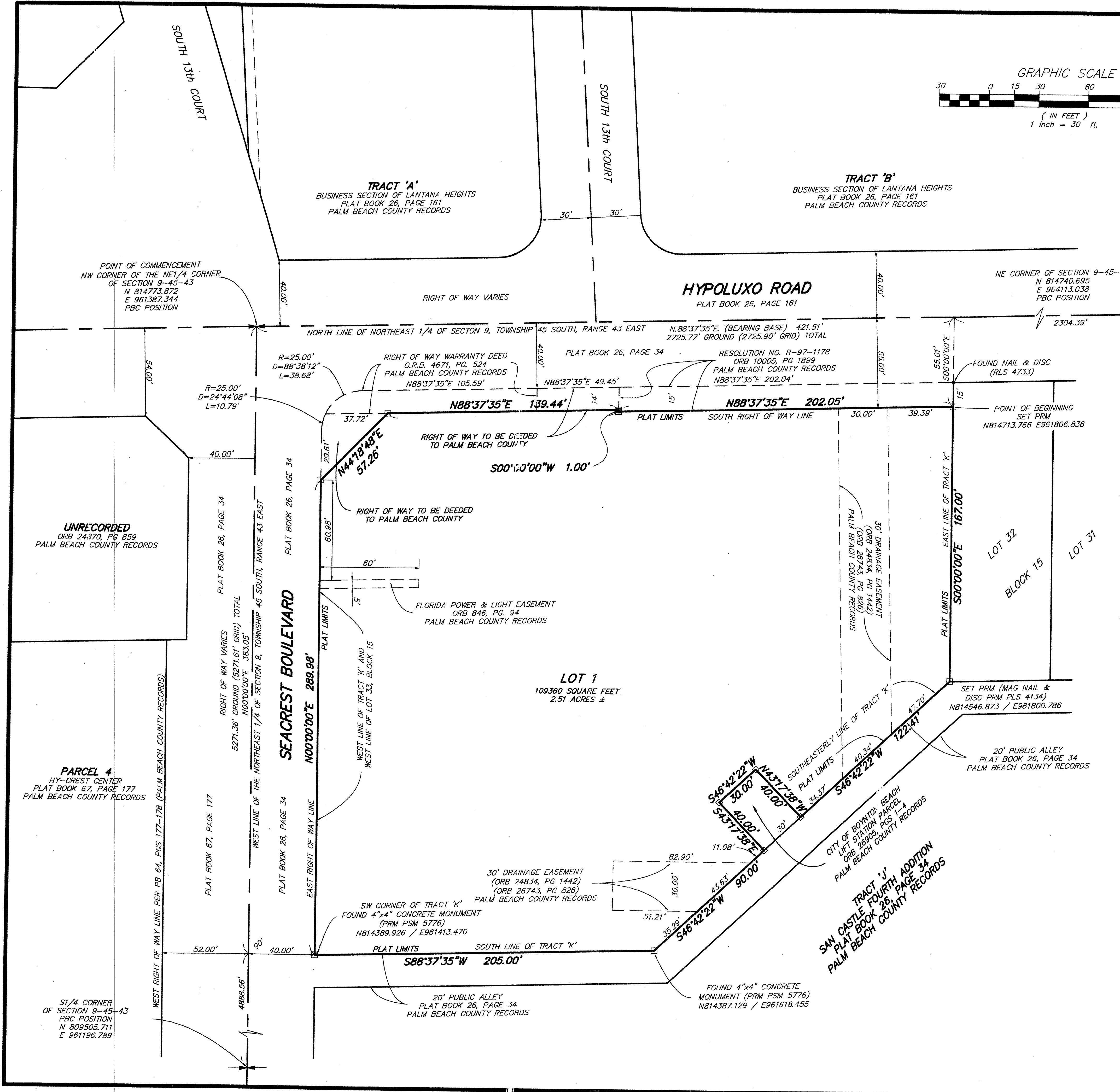
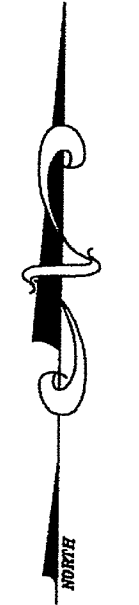
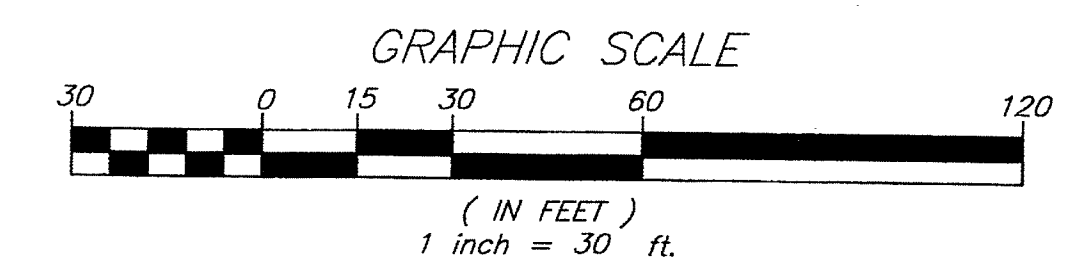


STATE OF FLORIDA
COUNTY OF PALM BEACH
THIS PLAT WAS FILED FOR
RECORD AT _____, THIS
DAY OF _____
2015, AND DULY RECORDED IN
PLAT BOOK _____, PAGE _____
SHARON R. BOCK
CLERK AND COMPTROLLER
BY: _____ D.C.

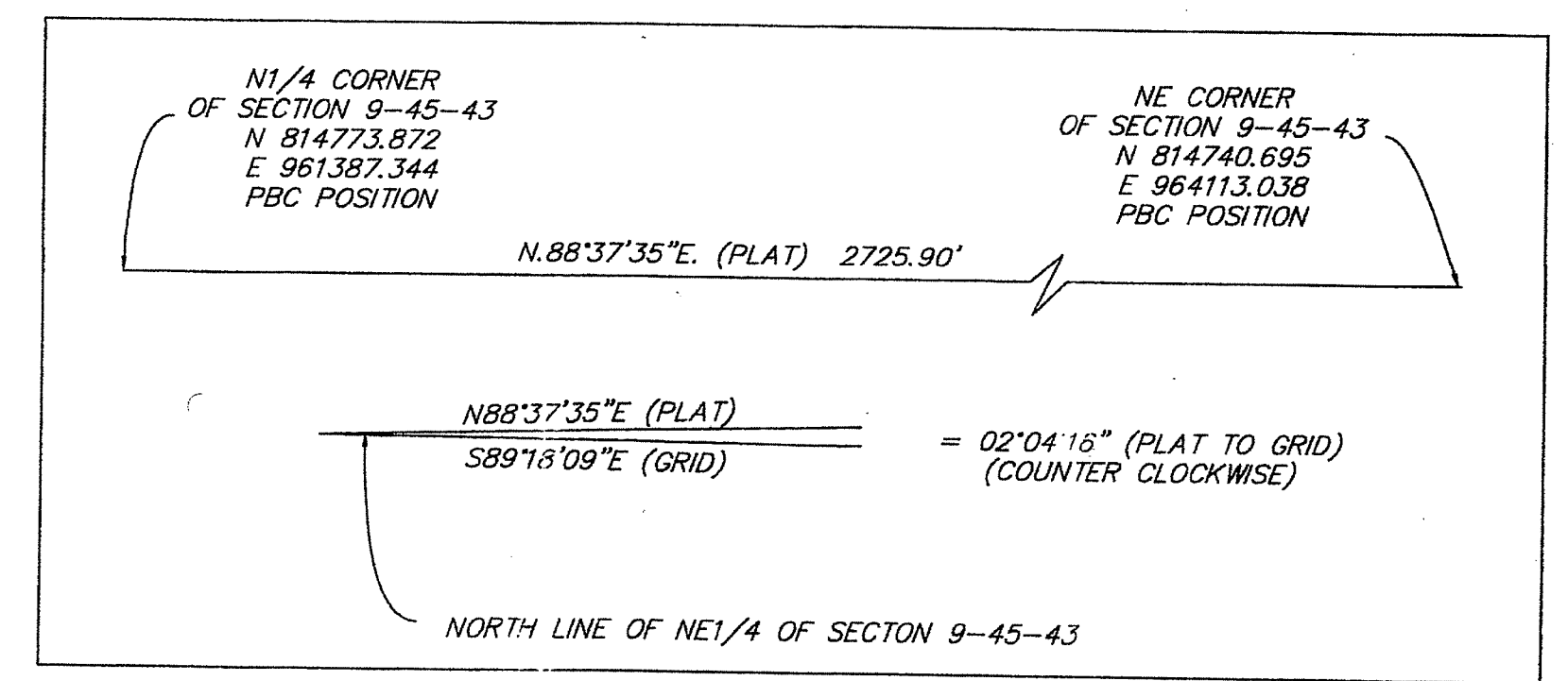


THIS INSTRUMENT PREPARED BY
ROBERT BLOOMSTER JR.
PROFESSIONAL SURVEYOR AND MAPPER NO. 4134
STATE OF FLORIDA
IN THE OFFICE OF
BLOOMSTER PROFESSIONAL LAND SURVEYORS, INC.
641 NORTHEAST SPENCER STREET
JENSEN BEACH, FLORIDA 34957
OFFICE PHONE NO. (772) 334-0868 - FAX NO. (772) 334-5283
LICENSED BUSINESS NO. 6013

RACETRAC PETROLEUM AT LANTANA

A REPLAT OF A PORTION OF LOT 33, BLOCK 15, SAN CASTLE
FOURTH ADDITION, ACCORDING TO THE PLAT THEREOF AS RECORDED
IN PLAT BOOK 26, PAGE 34, OF THE PUBLIC RECORDS OF PALM
BEACH COUNTY, FLORIDA; TOGETHER WITH A PORTION OF TRACT 'K',
SAN CASTLE FOURTH ADDITION ACCORDING TO THE PLAT THEREOF AS
RECORDED IN PLAT BOOK 26, PAGE 34 OF THE PUBLIC RECORDS OF
PALM BEACH COUNTY, FLORIDA.
ALL LYING IN SECTION 9, TOWNSHIP 45 SOUTH, RANGE 43 EAST
TOWN OF LANTANA, PALM BEACH COUNTY, FLORIDA.

SHEET 2 OF 2



LEGEND AND ABBREVIATIONS:
□ = PERMANENT REFERENCE MONUMENT,
SET 4"x4" CONCRETE MONUMENT & DISC
(PRM PLS 4134)
PLS = PROFESSIONAL LAND SURVEYOR
PRM = PERMANENT REFERENCE MONUMENT
PB = PLAT BOOK
PG = PAGE
ORB = OFFICIAL RECORDS BOOK
LB = LICENSED BUSINESS
R = RADIUS
L = ARC LENGTH
D = DELTA
PBC = PALM BEACH COUNTY

NOTICE:
THIS PLAT, AS RECORDED IN ITS GRAPHIC FORM, IS THE OFFICIAL DEPICTION OF THE SUBDIVIDED LANDS
DESCRIBED HEREIN AND WILL IN NO CIRCUMSTANCES BE SUPPLANTED IN AUTHORITY BY ANY OTHER
GRAPHICAL OR DIGITAL FORM OF PLAT. THERE MAY BE ADDITIONAL RESTRICTIONS THAT ARE NOT
RECORDED ON THIS PLAT THAT MAY BE FOUND IN THE PUBLIC RECORDS OF THIS COUNTY.